

NEWS from the Junction



A MESSAGE FROM CEO TREVOR WALKER

As 2023 comes to an end, I want to re-affirm Frontier Lithium's commitment to building positive relationships within your community.

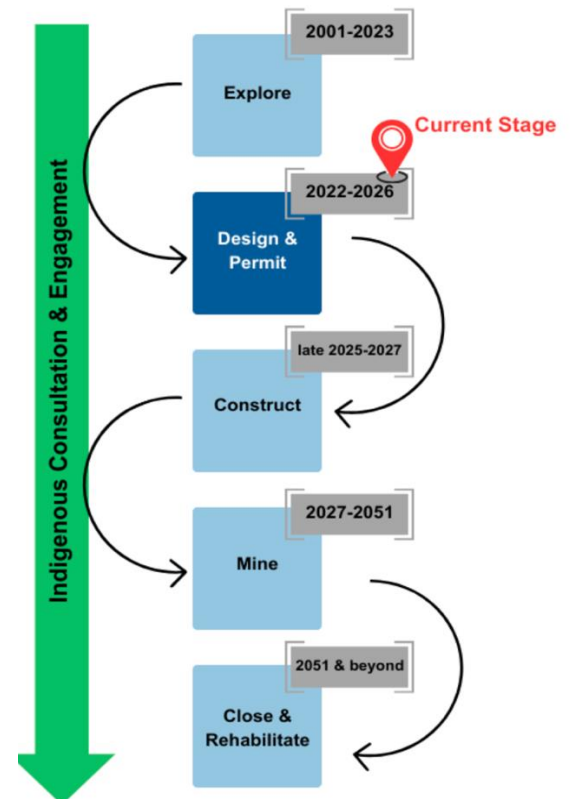
At Frontier, we value honest communication, and view this newsletter as a step towards keeping you, as members of local communities, informed. This newsletter will come every few months to provide you with updates about the project. A project website with additional information will also be live in the new year.

Your feedback matters to us and we are committed to working together respectfully and to fostering trust and understanding. To talk about the project, or to learn more, please reach out to us so we can provide information. See contact information at the bottom of the next page.

PAK LITHIUM PROJECT: PLANNING FOR MINING

Since 2001, steady progress has been made on the Pak Lithium Project — the highest quality and second largest lithium deposit in North America.

Over the past year, we have learned about the environment through baseline studies, about the deposit by taking/ testing large samples of the rock, and about the economics of the project through economic assessments.

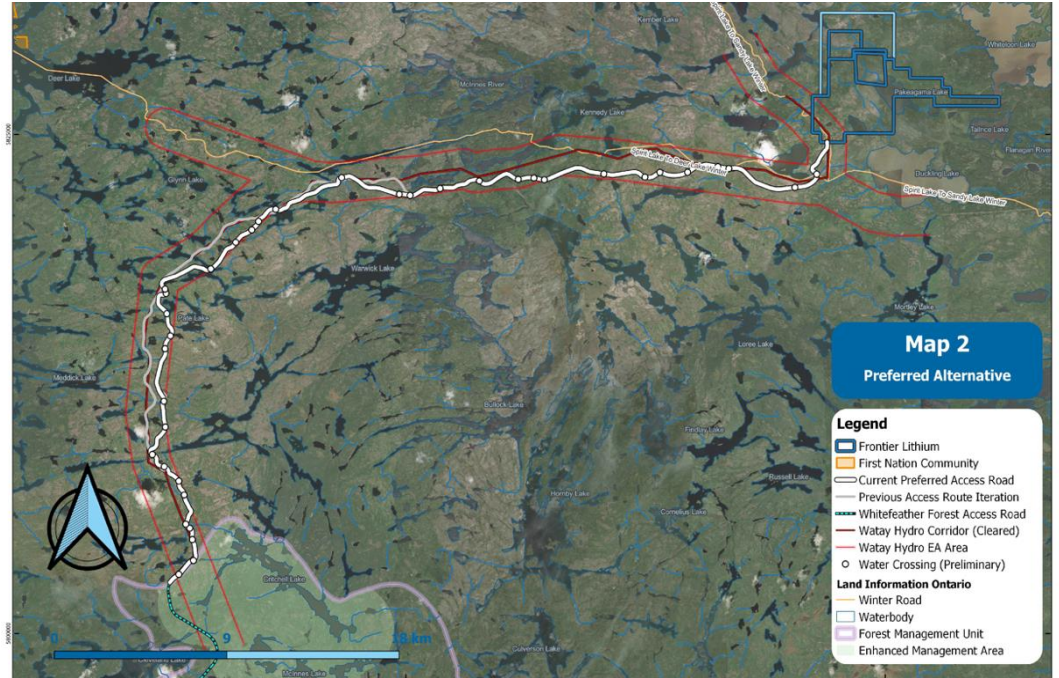


We also released a pre-feasibility study that considered the value of minerals in the ground and the cost of building a mine. The study sets out a conceptual design and helps to determine if the project is feasible. Given positive economic results in this study, we have begun a Definitive Feasibility Study (DFS), which is the next step in the process. It will look at that design more closely and identify how a mine would be built if the project moves forward.

We now know this resource has the potential to become a mine. As a next step, we must do the necessary work of figuring out what that mine would look like and securing all the required permits - all while making sure to involve you and consult with you every step of the way.

ADVANCING ALL-SEASON ROAD ACCESS

Frontier Lithium is exploring the idea of an all-season access road to the PAK Lithium site. The road would connect the Whitefeather Forest Access Road to the Frontier site near the junction. This new road would be available to the public and would be the start of all season access to the region. Consulting with communities during the preliminary and feasibility stages of the road



project is important to ensure all input is heard and considered from the start. Frontier has identified a preliminary route, shown above, which attempts to avoid culturally and environmentally significant areas, while still ensuring public safety. The route starts with a connection to the proposed Branchwood All-Season Road, and generally follows the environmental assessment corridor which was completed for the Wataynikaneyap project.

One example of how we adjusted the design is shown below. A more detailed poster is available, and we look forward to road specific discussions with you in your community over the winter months.



Photo: The original proposed bridge location identified with “⊘” on the image, was moved east to the area identified with the arrows, to avoid the wetland and to provide a better approach to the crossing.

PERMIT APPLICATIONS STATUS

Submitted

Land Use Permit – Knox camp (request to use Knox site for 4 years while we determine if there is a long-term use for the site)

Upcoming

Application to Watay for connection to the power line – triggers preliminary design and report development.